



CITY OF FISHERS AGENDA

BOARD/COMMISSION: Fishers Advisory Committee on Disability

DATE: 9/16/2025 at 5:30 PM

**ADDRESS: Fishers City Hall Theater,
1 Municipal Drive, Fishers, IN 46038**

Members of the public are encouraged to [submit comments to the board via this form](#) before 12 p.m. on the day of the meeting.

See the list of board members at [FishersIN.gov/FACD](https://fishersin.gov/FACD).

- 1. Call to Order / Roll Call**
- 2. Approval of Previous Minutes**
 - a. FACD Minutes 6-10-2025 DRAFT
- 3. Guest Speaker(s)**
 - a. Nancy Chance: Guest Speaker on ER Response COAD
 - b. Mendi Cooley: Guest Speaker on COOLabilities and Parent Networking
- 4. New Business**
 - a. Closed-Captioning Slides – September Initiative Deaf & Hard of Hearing Month
 - b. Fishers Community Center FACD Tour & Recommendations
 - c. Working with Michelle Morton with Nature Engagement at Conner Prairie
 - d. FACD Summit 9/18 Updates
 - e. October Initiatives – Reverse Job Fair Update

f. 10 Year Anniversary Initiative Ideas - December

5. Committee Update

a. Housing

b. Employment

c. Community Support

d. Networking/Social/Accessibility

6. Community Comment

a. Public Recommendations

7. Adjournment



CITY OF FISHERS AGENDA

BOARD/COMMISSION: Fishers Advisory Committee on Disability

DATE: 9/16/2025 at 5:30 PM

**ADDRESS: Fishers City Hall Theater,
1 Municipal Drive, Fishers, IN 46038**

Members of the public are encouraged to [submit comments to the board via this form](#) before 12 p.m. on the day of the meeting.

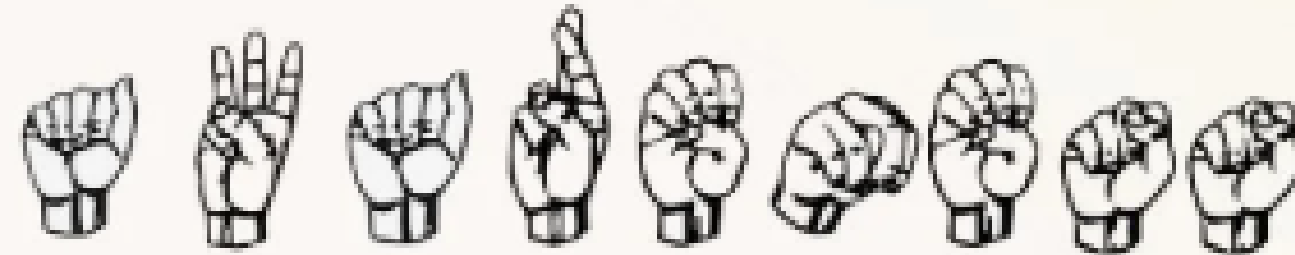
See the list of board members at [FishersIN.gov/FACD](https://fishersin.gov/FACD).

- 1. Call to Order / Roll Call**
- 2. Approval of Previous Minutes**
- 3. Guest Speaker(s)**
- 4. Staff Communication**
- 5. Announcements**
- 6. Adjournment**

September is



D E A F



A W A R E N E S S



M O N T H

Closed Captioning

Hamilton County is committed to creating an inclusive and accessible experience for everyone. Turning on closed captioning is simple and can be done using the settings on your TV or media devices.

By turning on closed captioning, your business shows its commitment to inclusivity, accessibility, and a better overall customer experience.

Together, we can ensure that everyone feels welcome throughout the county.





CLOSED CAPTIONS QUICK GUIDE

Many people are using closed captions for things other than accessibility. It is not tool just for only people who are Deaf or hard of hearing. Captioning needs to be viewed as a valuable tool that is not solely a part of accessibility. Several surveys show that captioning is beneficial for everyone and promotes equality justice for people of all abilities.

Closed Captions ON Always is for each and every person in Indiana. Your children, family members, friends, parents, and grandparents are able to understand and follow the news, information, shows, and sports easily with closed captions.



People that use closed captions aren't deaf or hard of hearing.



Zero cost to turn on closed captions.

LOUD NOISES IN RESTAURANTS?



Cannot hear at all?



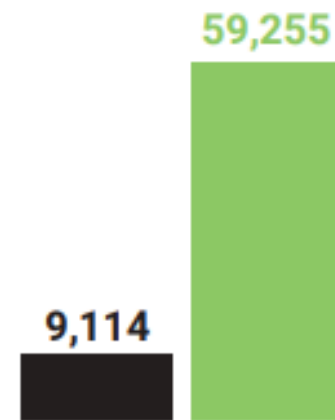
Turn on captions.



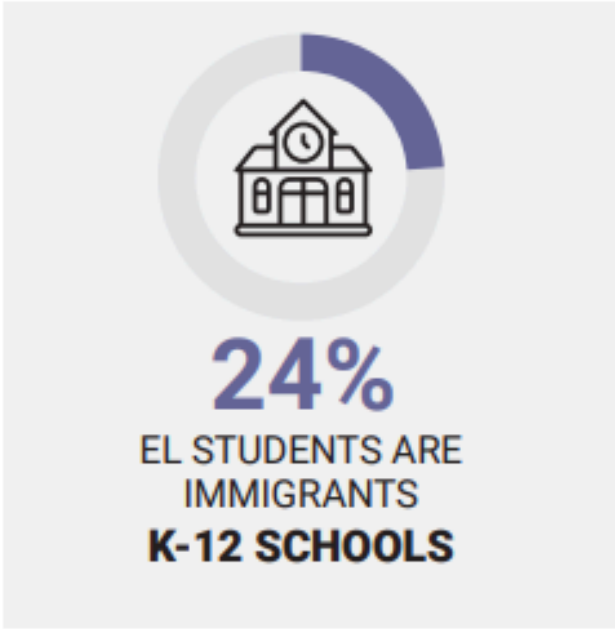
Easy Steps!

BUSINESS VALUE. ALLYSHIP. DIVERSITY. EQUITY. INCLUSION. ACCESSIBILITY.

EMERGENT LEARNERS



550%
Students:
 Indiana's English learner (EL) population growth between 1999 and 2018.



-The Teacher Educator: Volume 53, 2018. Issue 3: Immigration and Teacher Education



Indiana Dept. of Veterans Affairs



Centers for Disease and Control (CDC)



-AARP Indiana

500,000+ DEAF, DEAFBLIND, HARD OF HEARING

-2010 Census

2021 TV Viewership: Nielsen Ratings



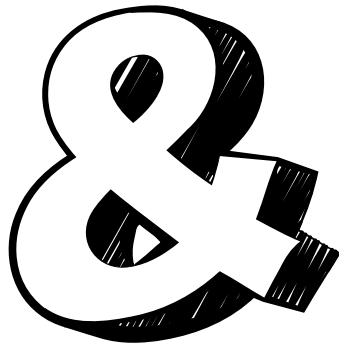




In support of the Indiana Association of the Deaf (IAD) and Hearing Loss Association of America, we are working to bring awareness about the need for closed captions in restaurants at all times.

The IAD serves as an advocate for more than 400,000 Deaf and Hard of Hearing Hoosiers, but did you know 80% of people that use closed captioning are not deaf or hard of hearing?

FISHERS
COMMUNITY
CENTER



On Tuesday, August 12, the Fishers Advisory Committee on Disability toured the new Fishers Community Center ahead of its November opening date to assess and provide ideas and feedback to ensure smooth and thoughtful accessibility for individuals with disabilities. Thank you to the Fishers Community Center for this opportunity!

Here were some of the FACD Suggestions:

- Stairway/wheelchair evacuation chair(s) for second floor escape in case of an emergency
- Recommended more playground strobe lights, positioned higher for better visibility – reviewing based on already completed electrical and construction work.
- Recommended adding automatic wheelchair accessible buttons at emergency exits to avoid needing to use other doors.
- Confirmed that closed-captioning will be provided during classes, including bike classes.

Also, the FACD was recently able to assist with the purchase of 2 water wheelchairs and helped select the model of chair ensuring proper measurements for the pool ramp and facility door way width.





Members of the Fishers Advisory Committee On Disability Toured the new Fishers Community Center To Provide Feedback on Accessibility



The Fishers Community Center is equipped with an adult changing table



Restroom counters are wheelchair accessible



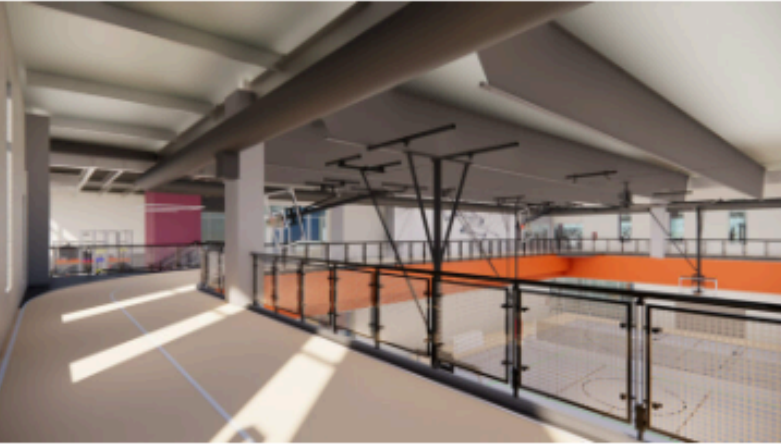
Pool has an accessible ramp and 2 water wheelchairs available

FREE FOR EVERYONE



INDOOR PLAYGROUND

5,300 sq. ft. of interactive play areas, a toddler zone, low-climbing structures, and a two-story play structure.



INDOOR WALKING/RUNNING TRACK

The indoor walking/running track overlooks the lower gym, offers all-weather use.



SAHM'S COMMUNITY CAFE

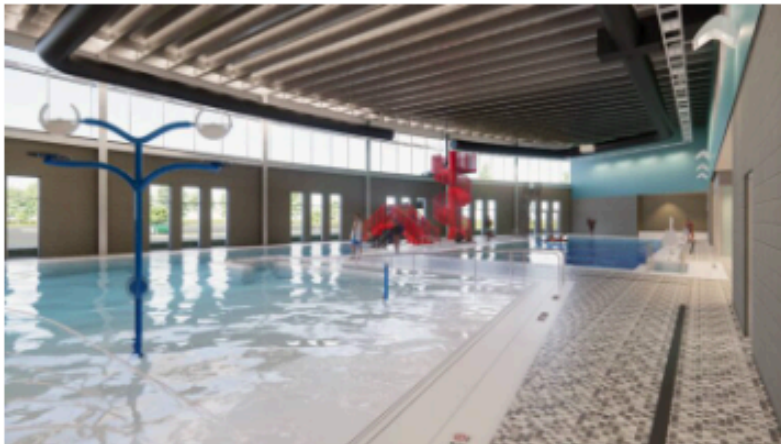
Sahm's Community Café offers a welcoming spot to gather, relax, and enjoy food and drinks.



COMMUNITY ROOMS

Spaces for meetings, programs, events, and community gatherings.

INCLUDED IN MEMBERSHIPS



AQUATIC CENTER

Features a 25-yard lap pool, AquaClimb wall, NinjaCross system, water slide, and a zero-depth warm water pool with interactive splash features.



SAUNA

An on-deck sauna where you can enjoy the many health benefits of dry heat.



INDOOR COURTS

Three full-size basketball courts that convert into six cross basketball courts, three volleyball courts, and up to nine pickleball courts.



CHILDCARE

Childcare for ages 2 months to 12 years features interactive activities and offers up to two hours daily for kids on household memberships.



**Memberships Available Now
at [FishersCommunityCenter.com](https://fisherscommunitycenter.com)**